

**This presentation is classified as**  
**UNCLASSIFIED**



# The New Zealand Defence Force



## Brief to Keystone 26-01

WO1 Michael Yorwarth

WO1 Corey Rewharewha



UNCLASSIFIED



TE OPE KĀTUA O AOTEAROA  
**DEFENCE FORCE**



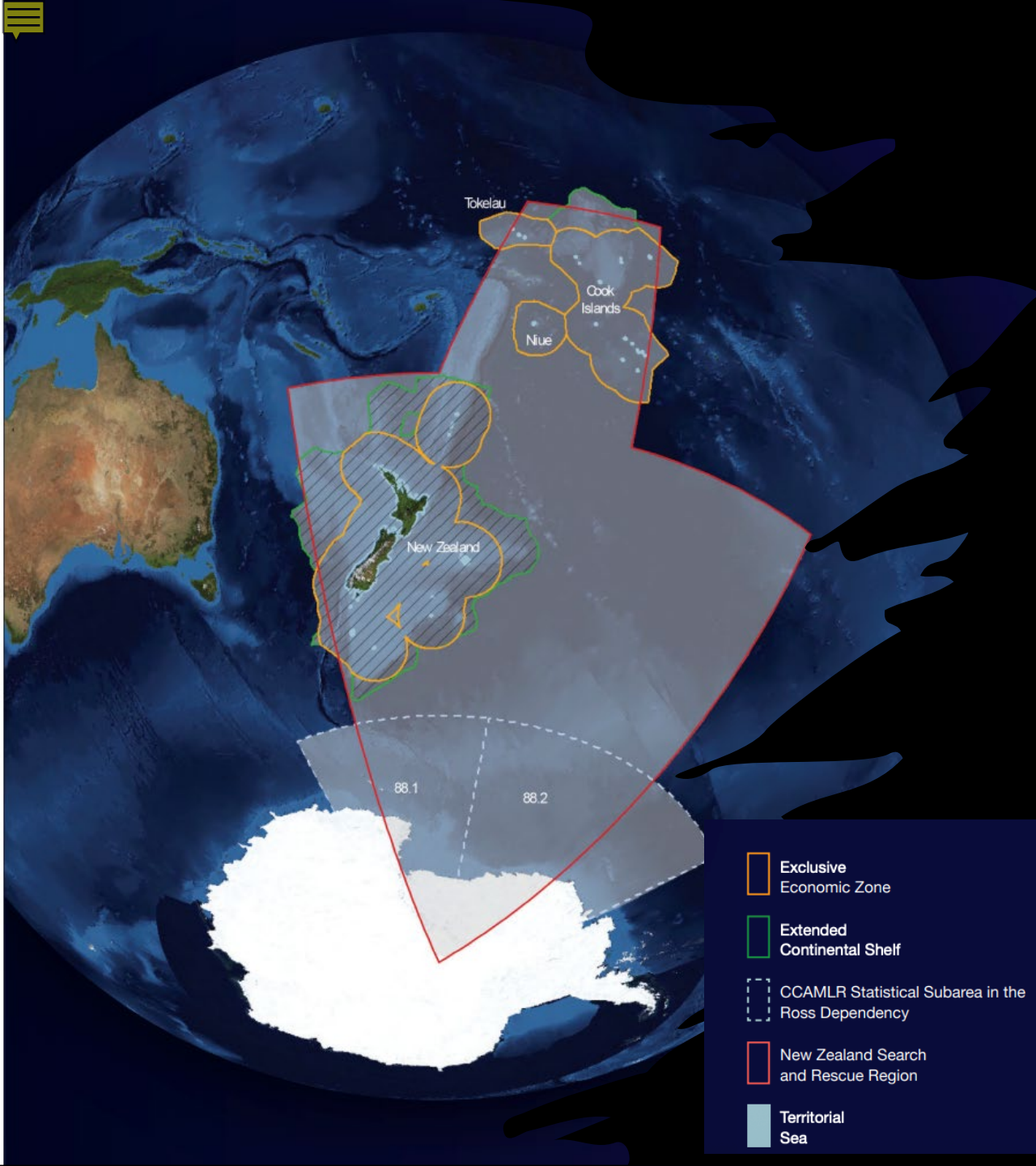
# New Zealand in the Security Environment

- Maritime, trade-dependent nation
- Security tied to regional stability
- Long history of coalition contributions
- Strong emphasis on partnerships and legitimacy



TE OPE KĀTUA O AOTEAROA  
**DEFENCE FORCE**





# NZDF Strategic Policy

- A secure, sovereign and resilient NZ
- A stable, secure and resilient region
- Collective security through a strong network of partners
- A strong and effective international rules-based order





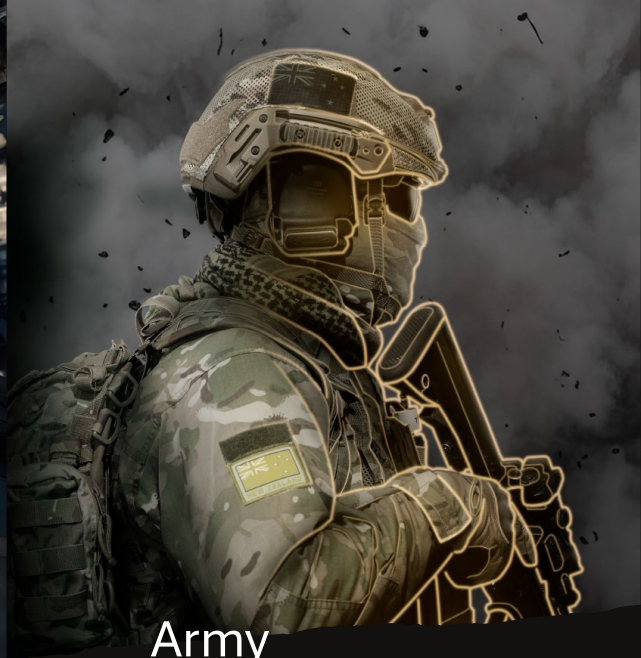
HQ JFNZ



Navy



Air Force

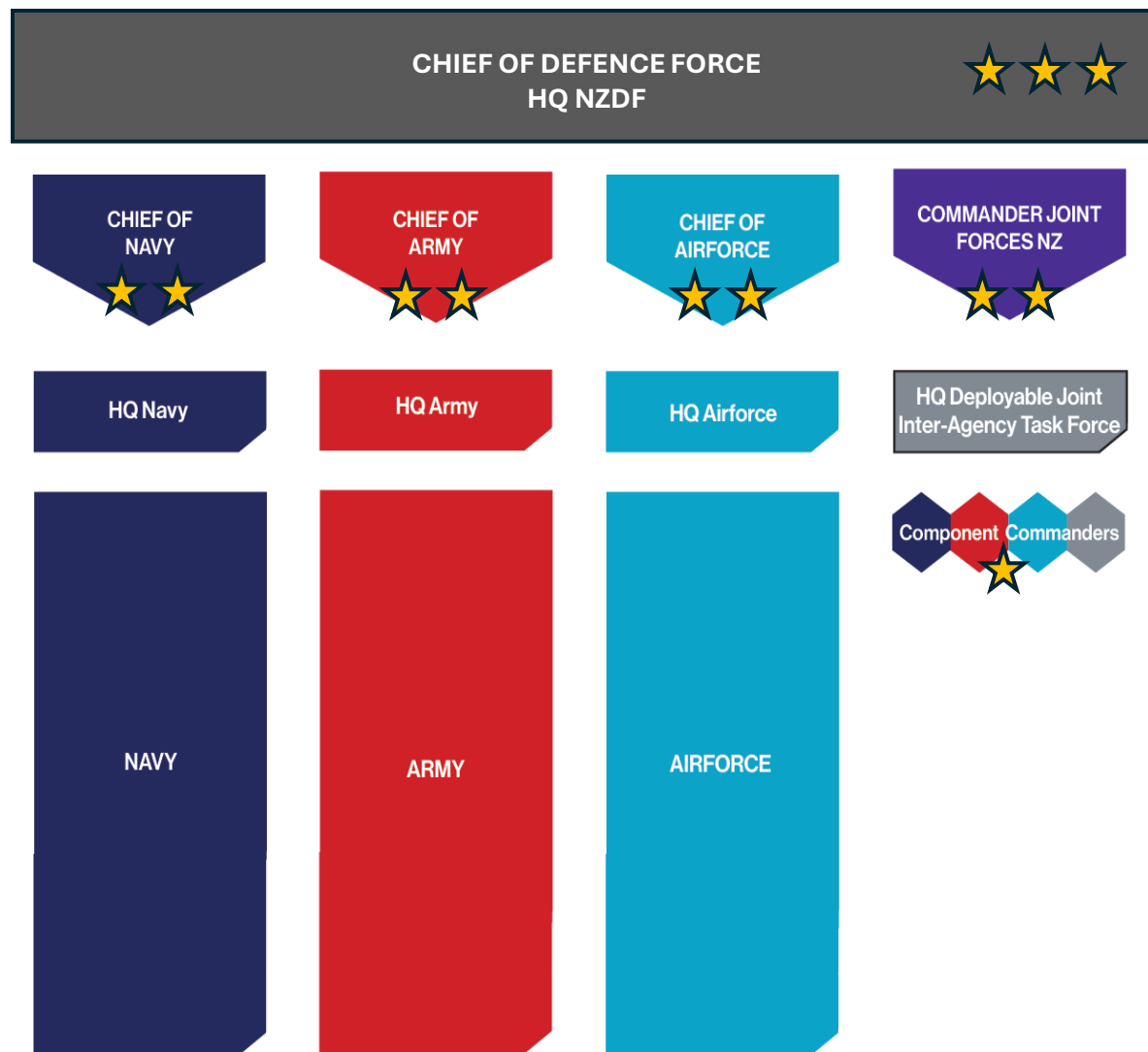


Army

# NZDF at a Glance

- Three services
- Joint force by design - operates as a single deployed force
- 15,000 regular, reserve, and civilian personnel
- Designed to integrate into multinational operations



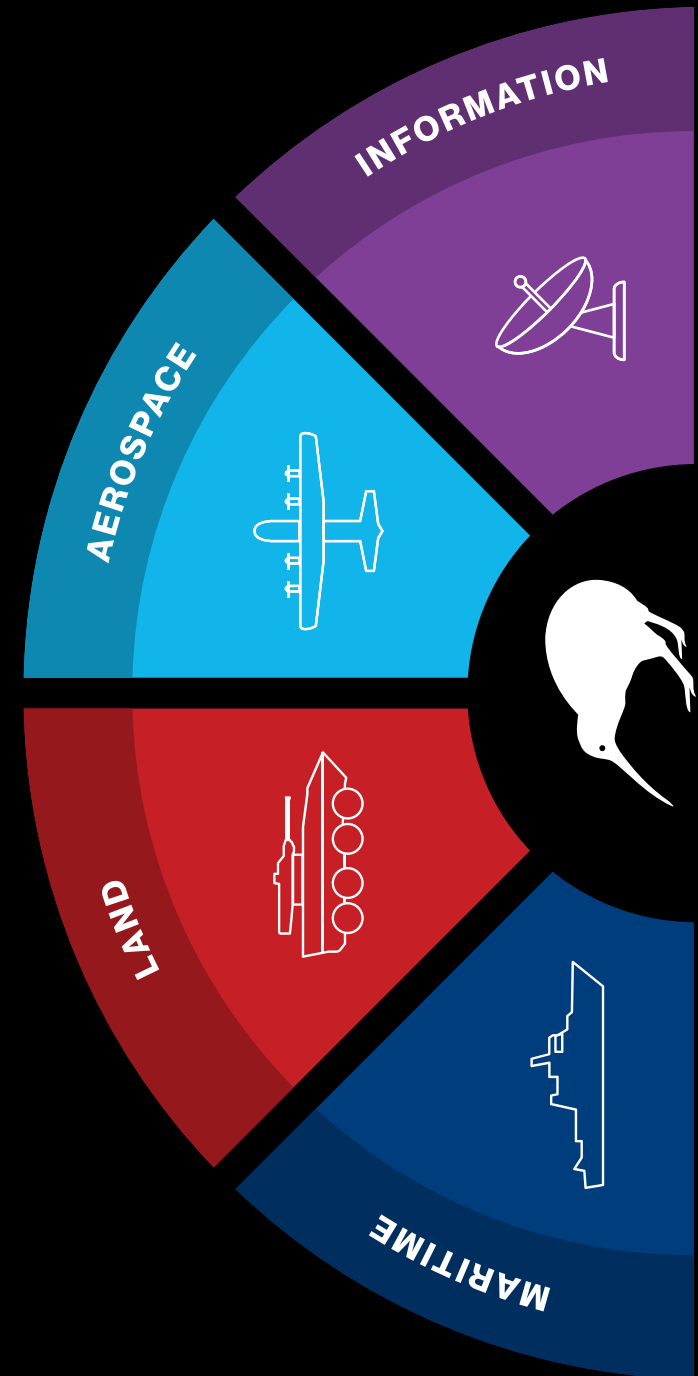


# NZDF Command Structure



# Joint Operations in the NZDF

- Joint Force Headquarters commands operations
- Single operational commander model
- Integrated planning across all domains
- Joint thinking embedded at every level



# Culture and Leadership

- Trust-based leadership
- Mission command philosophy
- Informal, adaptable approach
- Ethical conduct and professionalism
- Bi-cultural foundation



TE OPE KĀTUA O AOTEAROA  
**DEFENCE FORCE**





# Influence in the Pacific – Soft Power

- Presence without coercion
- Disaster response and humanitarian support
- Long-term engagement builds trust
- Defence diplomacy through action – consent based engagement



TE OPE KĀTUA O AOTEAROA  
**DEFENCE FORCE**

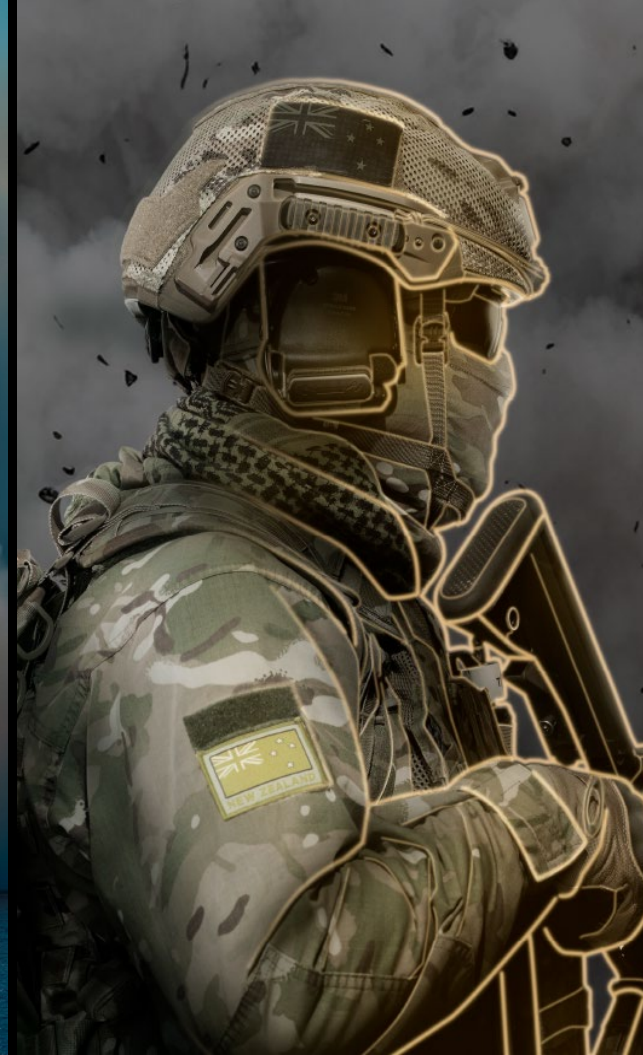


# NZDF - Looking Ahead

- Regionally - Increased demand from climate impacts
- Greater complexity across domains
- Need for agility over mass
- Continued reliance on partnerships







Questions?



TE OPE KĀTUA O AOTEAROA  
**DEFENCE FORCE**